

Storage-Wall

***The Perfect
Office Storage
Solution***

brava 
lifestyle offices



Brava Storage - Wall

'give us a blank wall and we will transform it to meet your requirements'



Brava Storage-Wall

will completely transform your office space to give you an integrated compact storage solution in those areas that would have been either never or to awkward to utilise.


The flexibility in both the internal equipment and the external structure allow it to fit almost anywhere.

All this means that you can, with our help, start thinking creatively about practical storage solutions that will not only meet but exceed your requirements.

Specification

Top & side scribes (when required) are manufactured from 18mm MFC with matching or contrasting 2mm PVC to all visible edges. These can either match the carcass, doors or be from a contrasting finish.

The carcass is constructed from 18mm MFC (melamine faced chipboard) with either matching or contrasting 2mm PVC to all visible or vulnerable edges. Assembly uses MS (mild steel) location pin & cams. The side panels are multi bored to allow the installation of internal fittings which can include (as shown)

- 
- Lateral filing shelf
 - Standard shelf
 - Pigeon hole unit
 - Roll out shelf
 - Roll out filing frame

(any other unit that could be manufactured or sourced to meet your specific requirements)

Decorative end panels (if required) are manufactured from 18mm MFC with matching or contrasting 2mm PVC to all visible edges.

Doors (drawer fronts when specified) are manufactured from 18mm MFC with matching or contrasting 2mm PVC to all visible edges. Doors open & close using 270 degree opening exposed axle hinges (4 per door).

All doors lock using the Espagnollete system with removable 5 plate combination barrel locks. Key sets can be either suited (keyed alike) or keyed to differ as required.

Plinths are manufactured from 18mm MFC with matching or contrasting 2mm PVC to all visible edges. These can either match the doors or be from a contrasting finish.



Brava Storage - Wall

'so flexible, the combinations are endless'



Storage-Wall

Standard arrangement, finished in oak with titanium finished plinths and black top scribes.



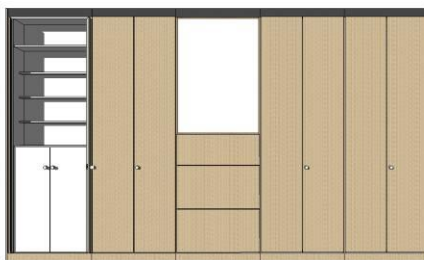
Storage-Wall

Variation arrangement including glass doors for display purposes finished in pear with matching plinths and top scribes.



Storage-Wall

Variation on the set above now with 2 lower pull out filing drawers and smaller top general drawer finished in apple with charcoal plinth and top scribe. Drawers have concealed push release catches.



Media-Wall

Storage wall variation now has an interactive/dry/wipe board centrally with lower storage for equipment, computers and wire management. The first and last main units now have hinge open and slide back doors revealing the hospitality area for drink and food presentation. The lower cupboard is complete with fridge. Drawers have concealed push release catches. Finished in ash with matching plinth and charcoal top scribe



Education-Wall

Storage wall variation now has an interactive board centrally with dry wipe boards either side with lower storage for equipment computers and wire management. The first and last main units allow for additional equipment storage. Drawers have concealed push release catches. Finished in maple with charcoal plinth and top scribe



Brava Storage - Wall

'pick a colour, any colour, 6 standard finishes available, but hundreds more to choose'



Door Combinations

Doors & drawer fronts are available in many combinations to suit your requirements.

Below is an example of a clients recycle unit requirement. The solution was as an acrylic sign indicating the recycle point with a removable waste container behind the door.



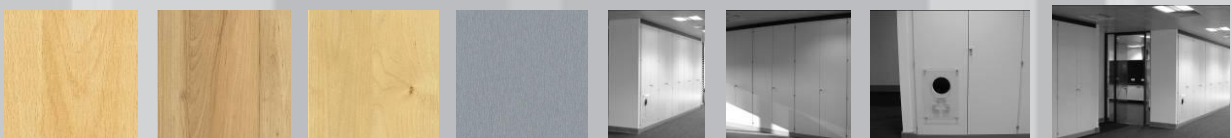
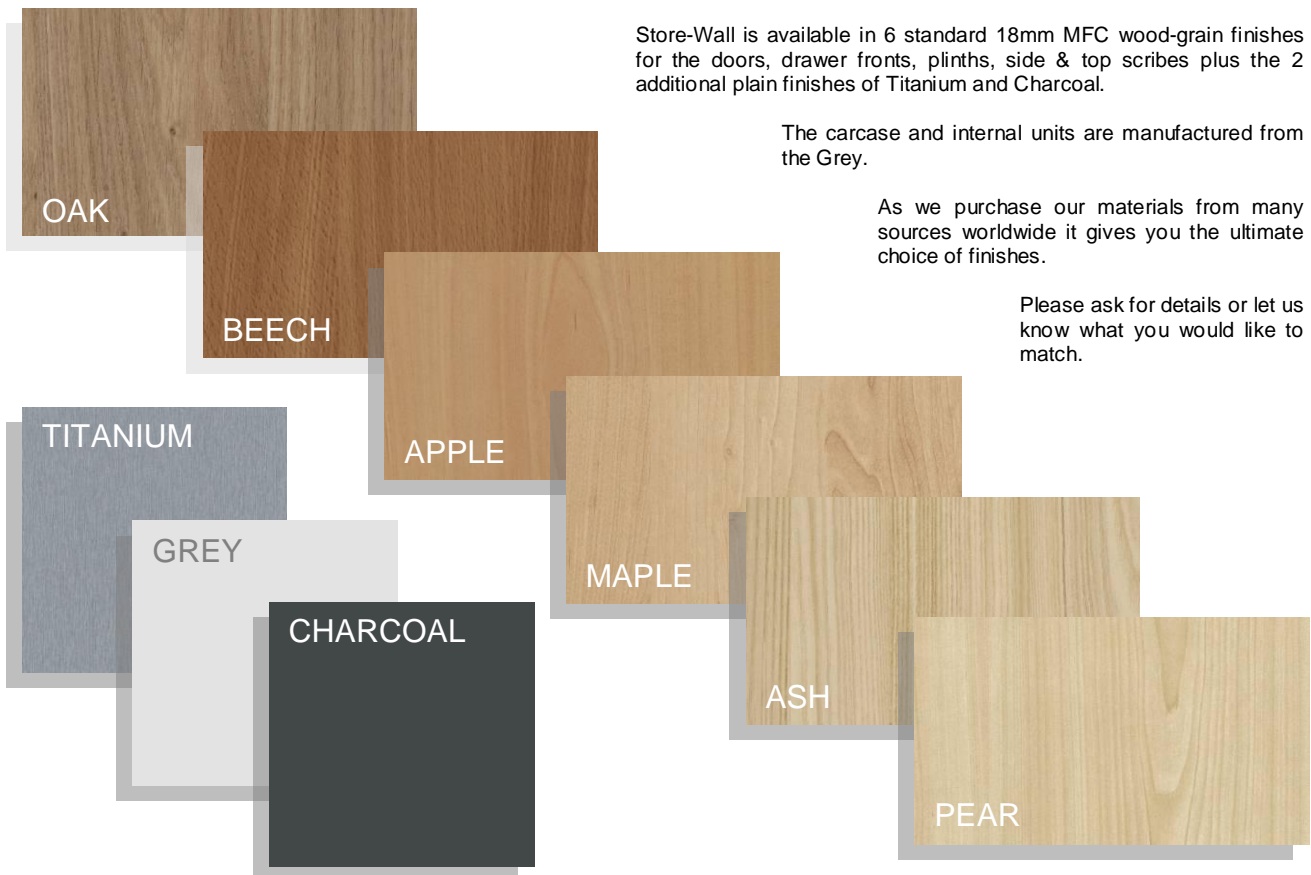
Finishes

Store-Wall is available in 6 standard 18mm MFC wood-grain finishes for the doors, drawer fronts, plinths, side & top scribes plus the 2 additional plain finishes of Titanium and Charcoal.

The carcass and internal units are manufactured from the Grey.

As we purchase our materials from many sources worldwide it gives you the ultimate choice of finishes.

Please ask for details or let us know what you would like to match.

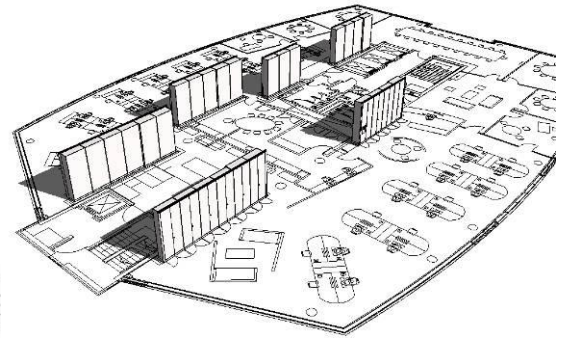
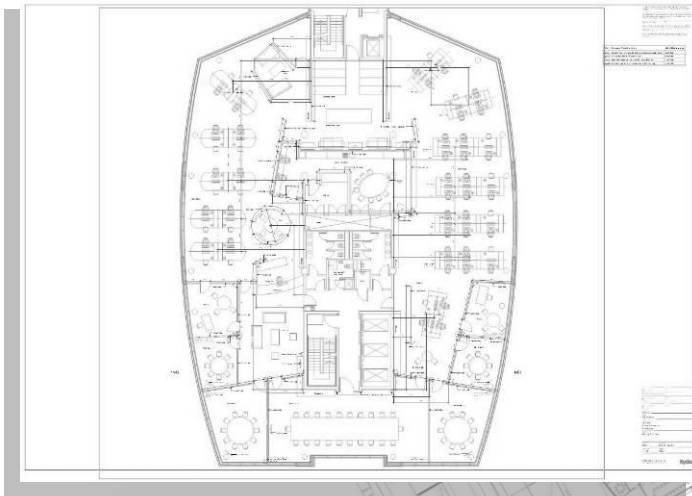


Brava Storage - Wall

'from survey to implementation, take the right road to a successful solution'

Brava Storage-Wall

This is a recent project at the prestigious Baltic Place buildings in Newcastle-upon-Tyne. The installation required 6 areas of store wall (28 units in total), each of the areas was to have suited locks and a mix of shelves and roll out filing frames. The brief also specified that in each run 1 unit was to be for coats. A further requirement was for a safe to be included in 2 of the 28 units as well as 2 of the 28 units requiring a recycle point. The finish was all white carcass, doors, shelves and side scribes. Top scribe was black and the plinth Titanium finish.



brava *'lifestyle'* collection

Designed, manufactured & installed to meet your expectations.

Special 'bespoke' furniture to meet your specific requirements

AutoCad & space planning service

After sales service

5 year guarantee

Survey

Design

Planning

Manufacture

Delivery

Installation

Facilities Management

brava 
lifestyle offices

Brava Lifestyle Ltd
Rotterdam House
116 Quayside
Newcastle-upon -Tyne
NE1 3DY

Tel: 0845-500 4343
email: info@bravals.com

web: www.bravalifestyle.com



BS EN ISO 9001:2000

